

A little book about hunting for art

ISBN 978-952-93-1829-2

The Elk of Åland

Juha Pykäläinen

The Elk of Åland

Juha Pykäläinen

Text: Sebastian Johans

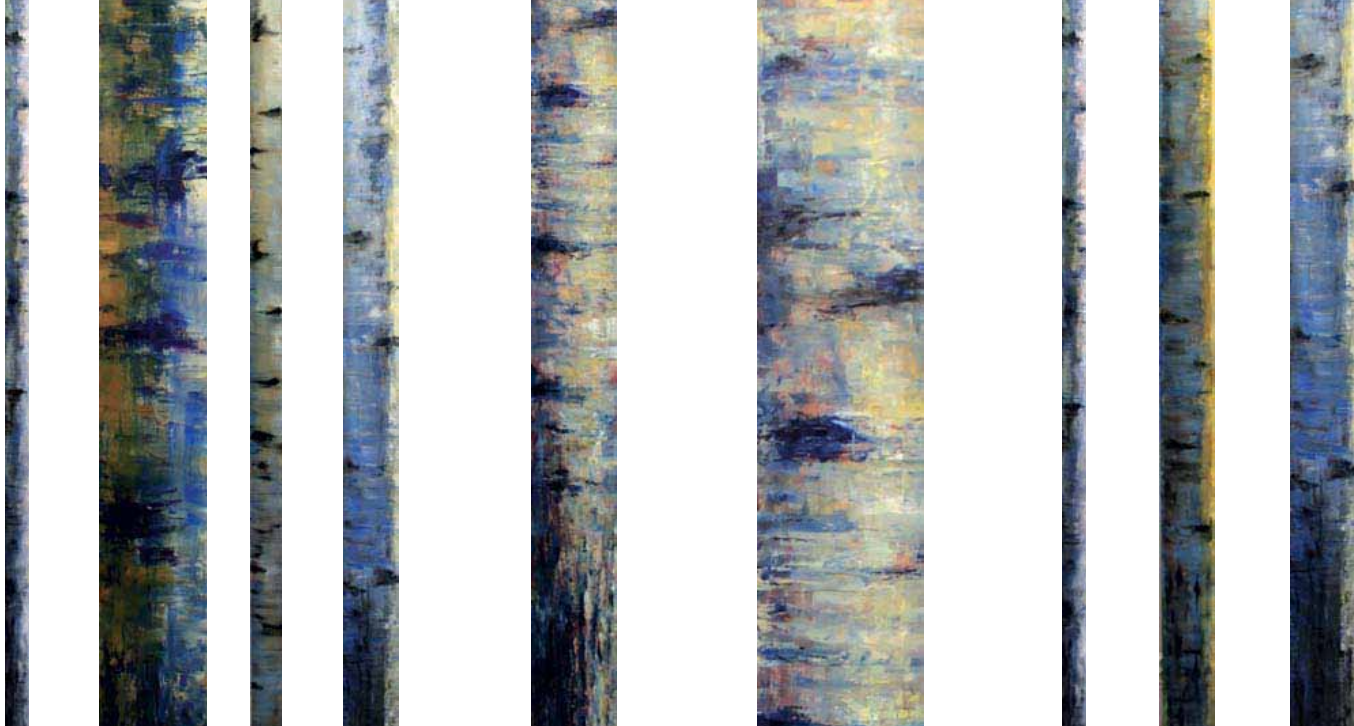




Juha P.

Juha Pykäläinen

Painter, graphic artist and sculptor.



Juha Pykäläinen, born 1953, in Tampere, Finland.

Painter, graphic artist and sculptor. Full-time artist since his first solo exhibition in 1975.

In 1989, attracted by the beauty of its nature, which has always been an important source of inspiration for his creative work, he moved to Åland.



Juha Pykäläinen is a self-taught artist. His principal medium is painting, but he also works with metal-plate engraving and sculpture in a variety of materials, including bronze, concrete and wood. On top of that, he has illustrated books, designed postage stamps, and made a number of portraits.

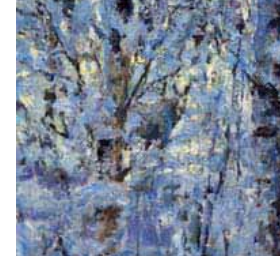
He is known for diverse art-related projects, including the *Helge Hirvinen* elk tower and a large cultural project



comprising various sculptures and exhibitions at the old Kobba Klintar pilot station on a small island on the approach to Mariehamn, the Åland Islands' only city.

He has had numerous solo exhibitions, participated in invited exhibitions, is represented in various collections, and has been awarded several prizes and grants.

Complete, up-to-date CV, together with details of current events: **www.juha.ax**



A tower with many legs

Juha Pykäläinen's elk-shaped *Helge Hirvinen* hunting tower is both simple and complicated.



On one level *Helge Hirvinen* is just what it says it is: a tower that makes hunting easier for the hunter or hunters who climb up onto it. The primary functions of the hunting tower are still intact. Just as with towers of a more conventional appearance, *Helge Hirvinen* lets the hunter go up above ground level to get a better view, to use a shooting support, and to hunt more safely. Of course, the obvious difference is the tower's appearance. Pykäläinen





has made it in the shape of an elk, and thus given it a humorous, not to mention lop-sidedly smiling, undertone. The elk are shot from an elk.

On top of that, the tower's distinctive design gives it an added value that virtually serves as a visiting card for its creator. From a distance and seen against the light, the tower can at first glance give the impression of being a real elk, standing in majestic stillness and peering out across



the open terrain that generally constitutes its immediate environment. But even without any illusions the shape of the tower fixes itself in our memory, and can easily be seen as a little exclamation mark on the landscape. On Åland, where Pykäläinen lives and works, there are more than forty versions of the sculpture tower. And, since Åland is an island of relatively limited size, this means you are confronted with the tower comparatively regularly,

